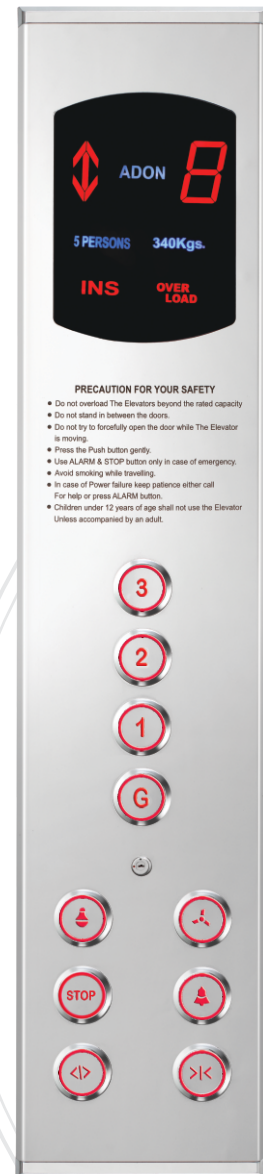


# Standard Series

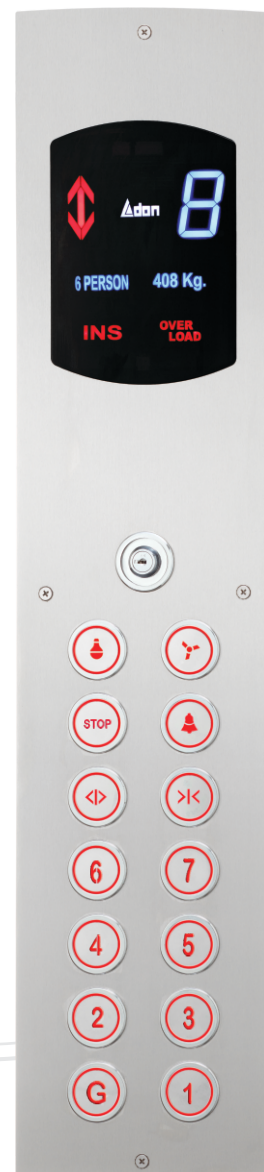
# Standard Series



ADON-R2C



ADON-R2L



ADON-R1C



ADON-R1L

**Size:**

Option 1	(COP: 1000 mm x 180 mm)	(LOP: 300 mm x 100 mm)
Option 2	(COP: 800 mm x 180 mm)	(LOP: 250 mm x 100 mm)

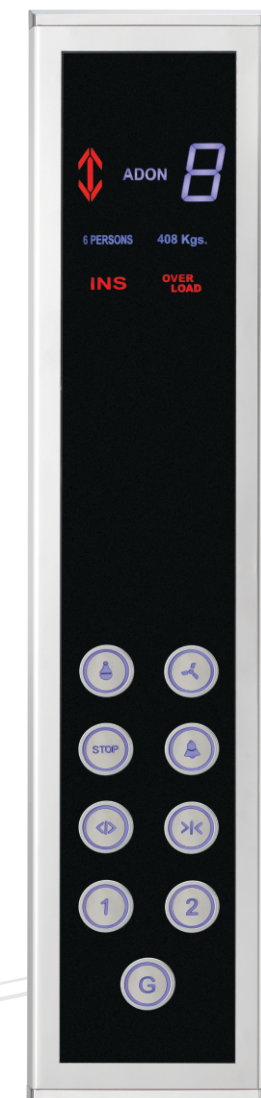
# Standard EXCLUSIVE SERIES



ADON-S1 C



ADON-S1 L



- Exclusive Metal Body make more robust design.
- Special Design For Wall mount.



**BUTTONS**



BR2



BR1



BS1



BO2



R1



S1



R2



O2



O1





TFT Color Display 5.7"



TFT Color Display 4.3"



TFT Color Display 5"

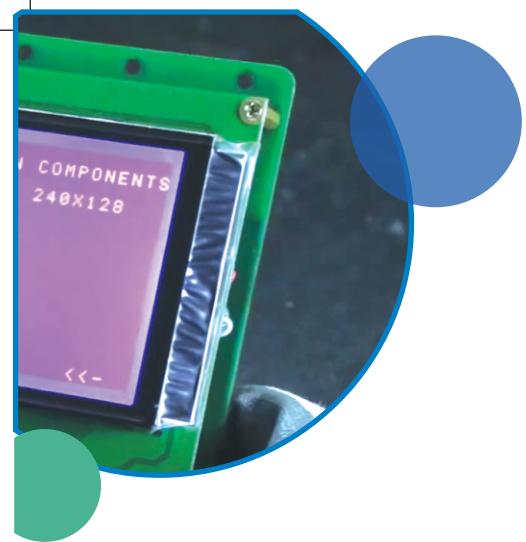


TFT Color Display 3.2"

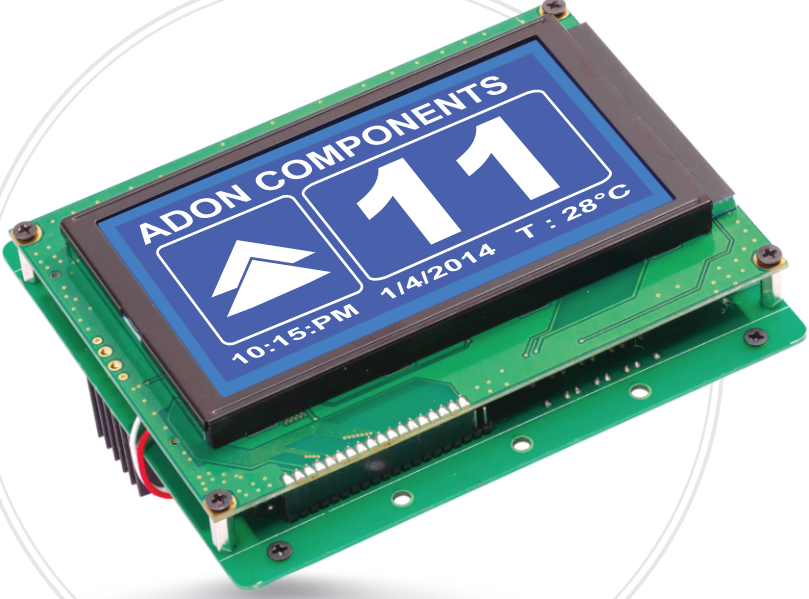
**FEATURES:**

- Advertisement function increases the added value of displays, and express users' uniqueness and diverseness.
- TFT LCD display is easy to use with its multi-function settings.
- Users can change messages by themselves, such as background pictures, arrow, floor, time and date.
- East to update pictures and modify messages by USB.
- High definition makes the images more active and lively.
- All Above Display Comes in two variant Seven Segment Input.
- CANbus Serial Input With Button and Call Register I/O.





**Monochrome**  
Display



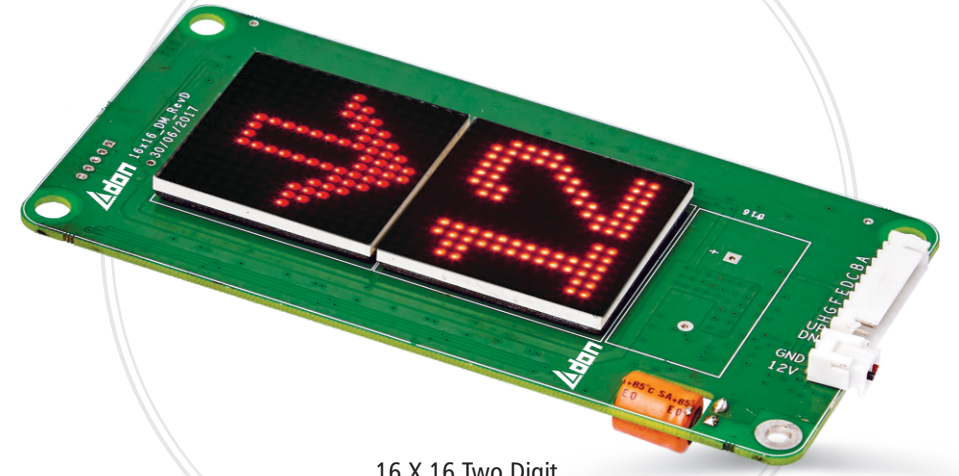
240 X 128 GLCD Monochrome



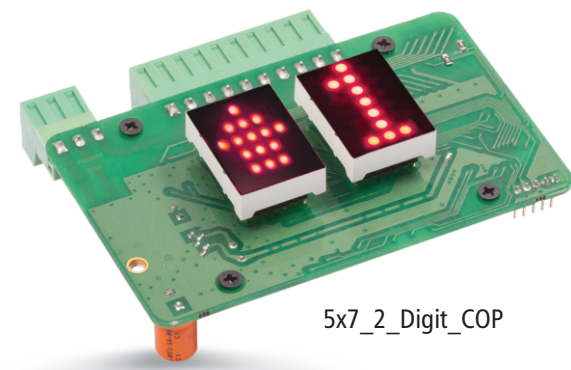
128 X 64 GLCD Monochrome

- All Above Display Comes in two variant
- Seven Segment Input.
  - CANbus Serial Input With Button and Call Register I/O.

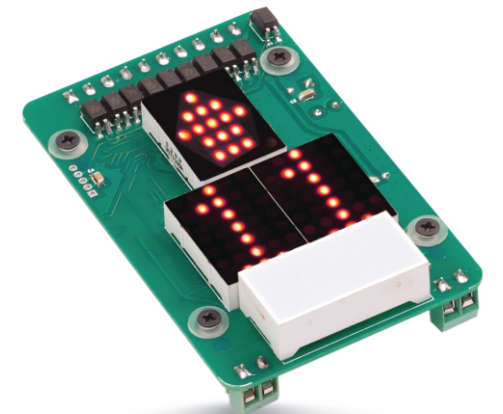
**Dot Matrix**  
Display



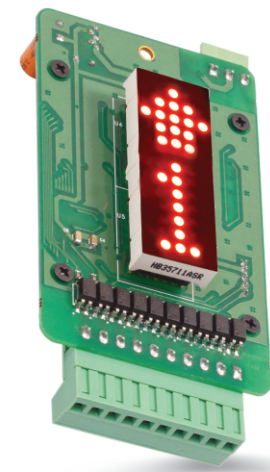
16 X 16 Two Digit  
Dot Matrix Display



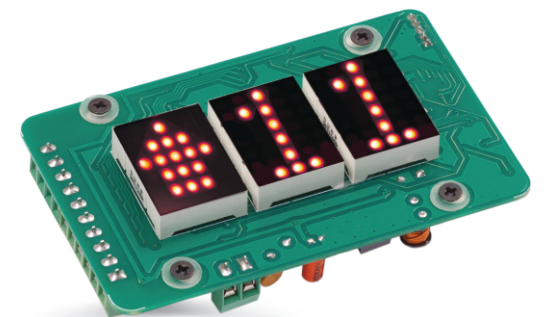
5x7\_2\_Digit\_COP



5x7\_3\_Digit\_COP



5x7\_2\_Digit\_LOP



5x7\_3\_Digit\_LOP

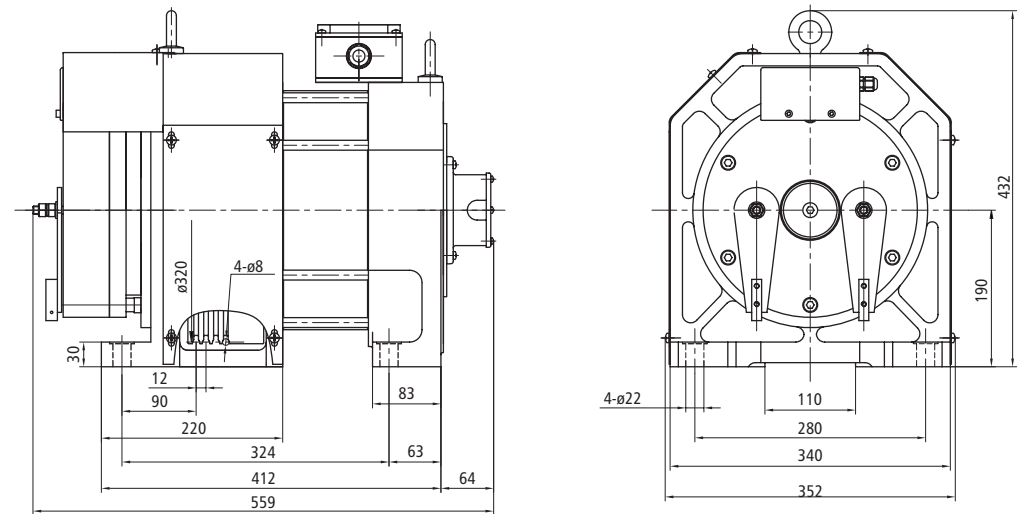


IMPORTED  
**Hepu Power**  
Gearless Motor

**ECO FRIENDLY**  
PRODUCTS

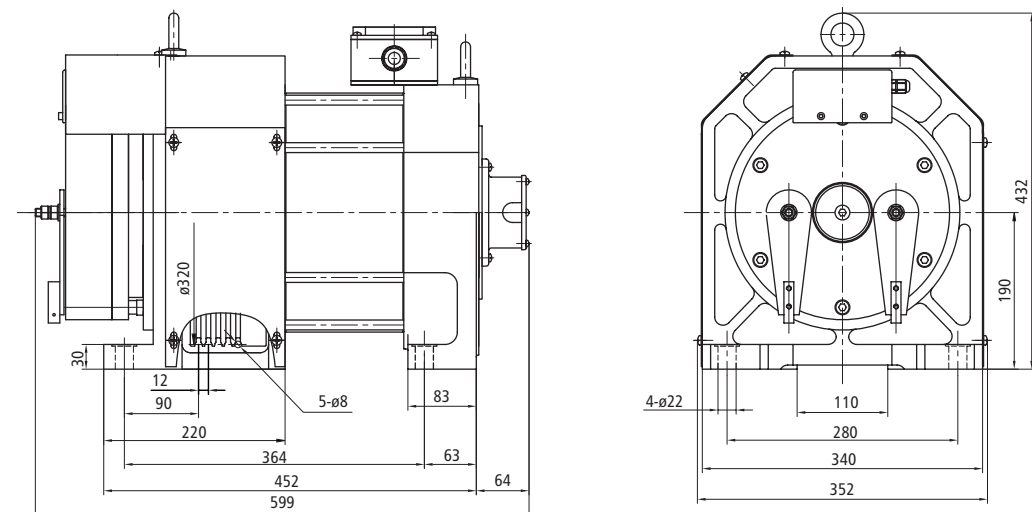


| Capacity : 408 kg | Roping : 2:1 | Elevator Speed : 0.5 M/s., 2.0 M/s.



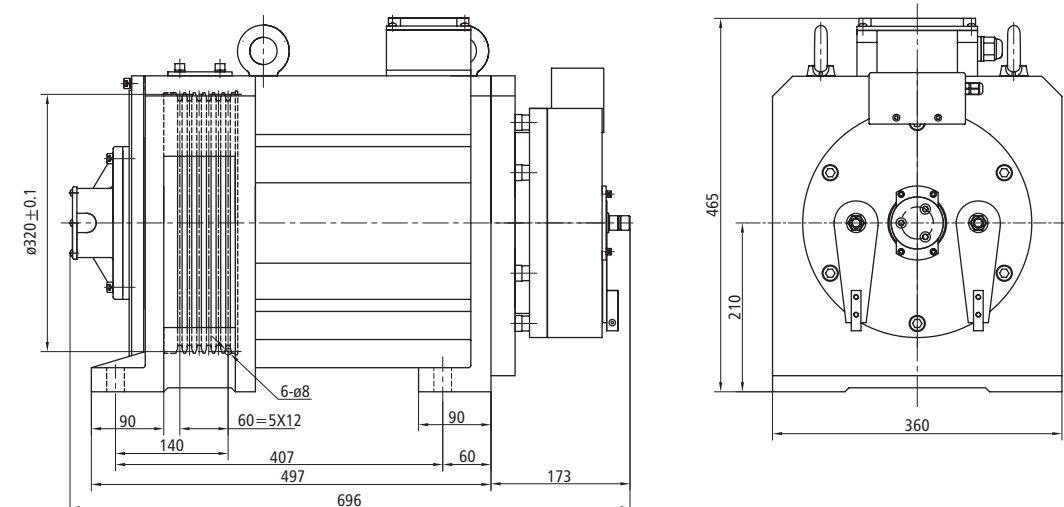
Capacity : 408 kg

| Capacity : 544 / 680 kg | Roping : 2:1 | Elevator Speed : 0.5 M/s., 2.0 M/s.



Capacity : 544 / 680 kg

| Capacity : 800 To 1000 kg | Roping : 2:1 | Elevator Speed : 0.5 M/s., 2.0 M/s.



Capacity : 800 to 1000 kg

Machine Series	Passenger	Capacity (KG)	Speed (m/s)	Rated Output (kW)	Rated Current (A)	Rated Speed (rpm)	Frequency (Hz)	Sheave Dia (mm)	Poles (2P)	Torque (N.m)	Ropes	Groove	Cut Angle	Groove Angle	Machine Voltage (V)
WTD2-P	6P	408	1	2.8	7.3	119	19.9	320	20	240	4-ø8-12	Undercut U	90°	30°	380V
		408	1.5	4.1	11.8	179	29.8	320	20	240	4-ø8-12	Undercut U	90°	30°	380V
	8P	544	1	3.6	9.8	119	19.9	320	20	240	4-ø8-12	Undercut U	90°	30°	380V
		544	1.5	5.5	15.7	179	29.8	320	20	240	4-ø8-12	Undercut U	90°	30°	380V
	10P	680	1	4.5	10.8	119	19.9	320	20	337	5-ø8-12	Undercut U	90°	30°	380V
		680	1.5	6.8	18.4	179	29.8	320	20	337	5-ø8-12	Undercut U	90°	30°	380V
	13P	844	1	5.8	13.3	119	19.9	320	20	536	6-ø8-12	Undercut U	90°	30°	380V
		844	1.5	9	22.1	179	29.8	320	20	536	6-ø8-12	Undercut U	90°	30°	380V
	15P	1020	1	6.6	15	119	19.9	320	20	536	6-ø8-12	Undercut U	90°	30°	380V
		1020	1.5	10	25	179	29.8	320	20	536	6-ø8-12	Undercut U	90°	30°	380V